



2021

Research,  
Scholarship, &  
Artistic Achievement  
Awards



2021

# Research, Scholarship, & Artistic Achievement Awards

The Tulane University Research, Scholarship, and Artistic Achievement Awards are to be given annually to honor outstanding scholars and to recognize exceptional research achievement and impact on advancing knowledge in science, engineering, health, education, or creativity in the arts, the humanities and other academic fields of study.

## Emcee

**MEG FARRIS**, *Medical and General Assignment Reporter,  
WWL-TV, New Orleans*

Meg Farris is a reporter at WWL-TV, specializing in health and medicine. A graduate of Isidore Newman School and the University of Mississippi with a degree in journalism, she served as a stringer for the UPI covering the federal court in Oxford, Mississippi. She started at WWL as a newsroom desk assistant and moved up to assistant assignment editor, satellite coordinator, producer and then reporter.

## Presenters

**MIKE FITTS, JD**, *President*

**ROBIN FORMAN, PhD**, *Senior Vice President for Academic Affairs and Provost*

**GIOVANNI PIEDIMONTE, MD**, *Vice President for Research*

**M. "TONETTE" KROUSEL-WOOD, MD**, *Associate Provost for the Health Sciences*

**DAVID BANUSH, MA**, *Dean of Libraries and Academic Information Resources*

**JESSICA SHEDD, MA**, *Assistant Provost for Assessment and Institutional Research*

## 2021 Research Hall of Fame Award

This prestigious lifetime achievement award recognizes a nationally and internationally renowned scholar/investigator who has made substantial contributions to advancing knowledge over his/her/their academic career.

**ELIZABETH HILL BOONE, PhD**, *Professor Emerita, Newcomb Art Department, School of Liberal Arts*

**JIANG HE, MD, PhD**, *Joseph S. Copes, MD Chair in Epidemiology, and Director, Tulane University Translational Science Institute, Department of Epidemiology, School of Public Health and Tropical Medicine*

**ROBERT FORCE, LL.M.**, *Niels F. Johnsen Chair of Maritime Law, and Director Emeritus, Maritime Law Center, School of Law*

**L. GABRIEL NAVAR, PhD**, *Professor and Chair, Department of Physiology, School of Medicine*

## 2021 Spirit of Tulane Award

This award recognizes outstanding achievement during the prior calendar year of a scholar/investigator whose work embodies Tulane's motto: *Non sibi, sed suis* (Not for oneself, but for one's own) while enhancing the research mission through education, creative expression, mentorship, and collaborative effort to advance knowledge.

**MONICA VACCARI, PhD**, *Associate Professor, Department of Microbiology and Immunology, Tulane National Primate Research Center and School of Medicine*

**GREGORY BIX, MD, PhD**, *Professor and Vice Chair of Clinical and Translational Research, and Vada Odom Reynolds Chair in Stroke Research, and Director, Clinical Neuroscience Research Center, Department of Neurosurgery, School of Medicine*

**MIA BAGNERIS, PhD**, *Associate Professor, Newcomb Art Department, and Director, Africana Studies Program, School of Liberal Arts*

## 2021 Innovation Award

This award recognizes a scholar/investigator who develops and explores novel ideas, approaches and insights through his/her/their interdisciplinary scholarship to address clinical, public health, or societal challenges.

**TANIKA KELLY, PhD**, *Professor and Vice Chair, and Director, Center for Public Health Genomics, Department of Epidemiology, School of Public Health and Tropical Medicine*

**TONY HU, PhD**, *Weatherhead Presidential Chair in Biotechnology Innovation, and Director, Center of Cellular and Molecular Diagnosis, Department of Biochemistry and Molecular Biology, School of Medicine, and the Department of Biomedical Engineering, School of Science and Engineering*

**NORA LUSTIG, PhD**, *Samuel Z. Stone Chair in Economics, Department of Economics, School of Liberal Arts*

## 2021 Galaxy Award

This award recognizes substantial achievement of a scholar/investigator who has a strong five-year history of funding and of enhancing Tulane's research mission through scholarship, education, mentorship, and collaborative efforts.

**LISA MORICI, PhD**, *Associate Professor, Department of Microbiology and Immunology, School of Medicine*

**LYDIA BAZZANO, MD, PhD**, *Lynda B. and H. Leighton Steward Professorship in Nutrition Research, and Director, Tulane Center for Lifespan Epidemiology Research, Department of Epidemiology, School of Public Health and Tropical Medicine*

**HANK ASHBAUGH, PhD**, *Professor, Department of Chemical and Biomolecular Engineering, School of Science and Engineering*

**DOUGLAS HARRIS, PhD**, *Professor and Schlieder Chair for Public Education Initiatives, Department of Economics, School of Liberal Arts*

## 2021 Provost's Award for Excellence in Equity, Diversity, and Inclusion

This award recognizes a scholar for excellence in research that addresses societal inequalities and promotes social change. Some indicators of excellence include extramural support of related research and dissemination of findings through high-quality peer-reviewed publications and national or international presentations that address societal inequities and promote social change. Broader impacts of EDI refers to the extent to which research advances participation of historically marginalized groups, promotes understanding of EDI, addresses societal inequities, develops community engagement and partnerships, distributes findings widely to support broad research understanding, and/or innovates social change.

**ROBERT ST. MARTIN WESTLEY, JD**, *Louisiana Outside Counsel Health and Ethics Foundation Professor of Legal Ethics and Professional Responsibility, School of Law*

**BRIGHAM WALKER, PhD**, *Assistant Professor, Department of Health Policy and Management, School of Public Health and Tropical Medicine*

**ELISABETH MCMAHON, PhD**, *Associate Professor, Department of History, School of Liberal Arts*

### THE ALBERT AND TINA SMALL CENTER FOR COLLABORATIVE DESIGN

**ANN YOACHIM, MPH**, *Professor of Practice, School of Architecture, and Director, Albert and Tina Small Center for Collaborative Design*

**RASHIDAH WILLIAMS, MURbDes**, *Former Assistant Director of Operations, Albert and Tina Small Center for Collaborative Design*

**JOSE COTTO, MArch**, *Adjunct Lecturer, School of Architecture*

**NICK JENISCH, MArch**, *Adjunct Lecturer, School of Architecture*

**EMILIE TAYLOR WELTY, MArch**, *Favrot II Professor of Practice, School of Architecture*

## 2021 Funding Awards

These awards recognize a) the scholar/investigator in the STEM fields who has been awarded the largest combined dollar amount of funding for direct costs during the prior calendar year; and b) an artist/scholar/investigator in the non-STEM fields who has been awarded the largest combined dollar amount of funding for direct costs during the prior calendar year.

### STEM

**CHAD ROY, PhD**, *Professor, Department of Microbiology, School of Medicine, and Director, Infectious Disease Aerobiology, Tulane National Primate Research Center*

### NON-STEM

**MIA BAGNERIS, PhD**, *Associate Professor, Newcomb Art Department, and Director, Africana Studies Program, School of Liberal Arts*

**ADRIAN ANAGNOST, PhD**, *Assistant Professor, and Jessie J. Poesch Professorship in Art, and Director of Graduate Studies, Newcomb Art Department, School of Liberal Arts*

## 2021 Convergence Award

This award recognizes a Tulane scholar or team of scholars who successfully collaborate across schools, units, and departments to surpass traditional academic disciplines and further the research mission.

**STACY DRURY, MD, PhD**, *Associate Professor, and the Remigio Gonzalez, MD Professor in Child Psychiatry, Vice Chair of Research, Department of Pediatrics, School of Medicine*

**JAY RAPPAPORT, PhD**, *Professor, Department of Microbiology and Immunology, School of Medicine, and Director and Chief Academic Officer, Tulane National Primate Research Center*

## 2021 Student/Trainee Research Mentoring Award

This award recognizes an exceptional research mentor.

**PATRICIA KISSINGER, PhD**, *Professor, Department of Epidemiology, and Associate Dean for Faculty Affairs and Development, School of Public Health and Tropical Medicine*

**JANA LIPMAN, PhD**, *Associate Professor, Department of History, School of Liberal Arts*

## 2021 Rising Star Award

This award recognizes the work of an assistant professor, within five years of appointment to Tulane, who demonstrates exceptional growth and impact in one or more research areas.

**COURTNEY BRYAN, DMA**, *Assistant Professor, Department of Music, School of Liberal Arts*

**MICHAEL NAGUIB, PhD**, *Assistant Professor, and the Ken and Ruth Arnold Early Career Professor in Science and Engineering, Department of Physics and Engineering Physics, School of Science and Engineering*

**MAEVE WALLACE, PhD**, *Assistant Professor, Department of Social, Behavioral, and Population Science, School of Public Health and Tropical Medicine*



## 2021 Citation Award

This award recognizes the Tulane author of the peer-reviewed article with the highest number of citations during the prior calendar year. The recipient must be the corresponding author and Tulane must be the corresponding institution.

**ROBERT GARRY, PhD**, *Professor, Department of Microbiology and Immunology, School of Medicine, for "The proximal origin of SARS-CoV-2," Nature, April 2020*

## 2021 Publication Award

This award recognizes Tulane scholars/investigators with the best journal article and the best book published in the prior calendar year.

### BOOK

**ANDREW HOROWITZ, PhD**, *Associate Professor, and Paul and Debra Gibbons Professor, Department of History, School of Liberal Arts, for Katrina: A History, 1915-2015, Harvard University Press, published 2020*

### JOURNAL ARTICLE

**J. QUINCY BROWN, PhD**, *Associate Professor, Department of Biomedical Engineering, School of Science and Engineering, for "Pulmonary and cardiac pathology in African American patients with COVID-19: an autopsy series from New Orleans," Lancet Respiratory Medicine, July 2020*

# Tulane Research Council

**JOSEPH BULL, PhD**, *Chair, Associate Dean for Research, Faculty Affairs, and Graduate Studies, School of Science and Engineering*

**GIOVANNI PIEDIMONTE, MD**, *Vice President for Research, Office of Research*

**RICHARD CAMPANELLA, MS**, *Associate Dean for Research, School of Architecture*

**DAVID CHAE, ScD**, *Associate Dean for Research, School of Public Health and Tropical Medicine*

**ADRIENNE COLELLA, PhD**, *Professor, School of Business*

**MICHAEL CUNNINGHAM, PhD**, *Associate Provost for Graduate Studies and Research, Office of Academic Affairs and Provost*

**SUSAN DAVIES, PhD**, *Associate Dean for Research, School of Social Work*

**PATRICE DELAFONTAINE, MD**, *Executive Dean, School of Medicine*

**KATHARINE JACK, PhD**, *Associate Dean for Research, School of Liberal Arts*

**LEE HAMM, MD**, *Dean and Senior Vice President, School of Medicine*

**RONALD VEAZEY, DVM, PHD**, *Professor and Chair, Division of Comparative Pathology, Tulane National Primate Research Center*

## OTHER TULANE REPRESENTATIVES

**KATIE ACUFF**, *Associate Vice President, Principal Gifts, Office of Advancement*

**JOHN CHRISTIE**, *Executive Director, Office of Technology Transfer and Intellectual Property Development, Office of Research*

**SHARON COURTNEY**, *Vice President, Office of Government and Community Relations*

**JILL DANIEL, PhD**, *Director, Tulane Brain Institute*

**DEIRDRE EMBREE**, *Senior Project Manager, Office of Project Management and Strategic Consulting*

**GEORGE HARLEY**, *Executive Director and Associate Vice President, Major Gifts, Undergraduate Experience & Parents Program, Office of Advancement*

**KRISTINE HASKETT**, *Executive Director, Corporate, Foundation, and Research Relations, Office of Advancement*

**JIANG HE, MD, PhD**, *Director, Tulane University Translational Science Institute*

**S. MICHAL JAZWINSKI, PhD**, *Director, Tulane Center for Aging*

**ANNE-MARIE JOB, PhD**, *Director, Office of Research Proposal Development, Office of Research*

**KATHLEEN KOZAR**, *Director, Sponsored Projects Administration, Office of Research*

**MARIE A. “TONETTE” KROUSEL-WOOD, MD**, *Associate Provost for the Health Sciences, Office of Academic Affairs and Provost*

**JOHN SABO, PhD**, *Director, ByWater Institute*

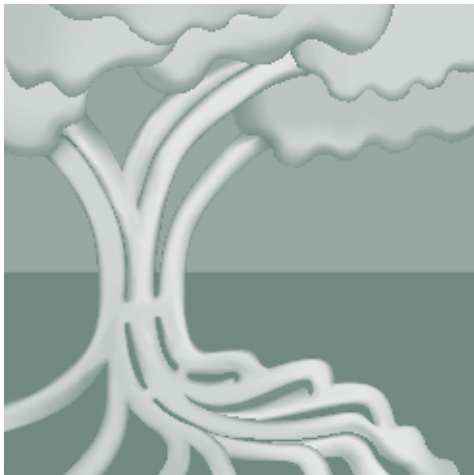
**JAI SHANKAR**, *Assistant Vice President, Office of Project Management and Strategic Consulting*

**ANNELIESE SINGH, PhD**, *Associate Provost for Diversity and Faculty Development, Office of Academic Affairs and Provost*

**JAMES ZANEWICZ, JD**, *Chief Business Officer, Office of Research Business Development, School of Medicine*

*Special thanks to the musical ensemble, students Max May, saxophone, Phil Rinaldi, keyboard, and Professor Henry Green, guitar, Department of Music, School of Liberal Arts.*





Tulane University

[research.tulane.edu](https://research.tulane.edu)